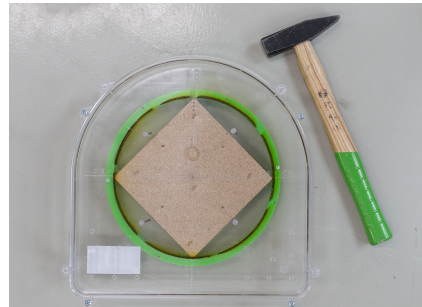


INSTALLATION INSTRUCTIONS - LOXONE SPEAKER BACK BOX

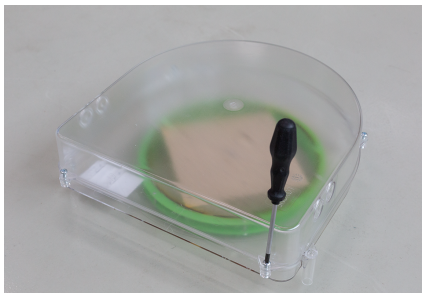
Type of construction: Cast concrete ceilings



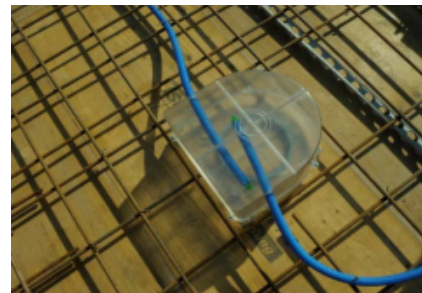
1. Determine desired location in the ceiling and mark position on cast.



2. Position the lower part of the speaker back box and fix in place with 4 nails. (Take care when fixing in place and only hammer in nails until they are flush with the top of the back box.)



3. Attach the upper part of the back box using 4 screws.



4. Connect the cable conduit. (Take care to avoid large gaps between back box and conduit)



5. After concrete has set and the cast has been removed::

- Remove any concrete that leaked into the back box
- Remove the temporary cover with a hammer.
- Remove any sharp plastic parts
- Remove nails